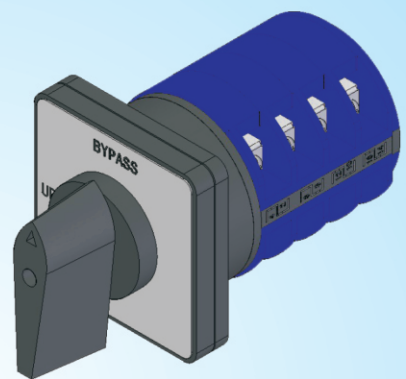


GSH2系列转换开关

GSH2 Series Change Over Switch

——控制电器产品名录 2014

安全 智能 灵动



CE UL CCC TÜV CB RoHS
ISO9001 ISO14001 OHSAS18001

用途 APPLICATION

GSH2系列转换开关主要用于交流50Hz、额定工作电压400V以下，直流电压230V以下，供手动不频繁接通、分断或转换交流直流负载电路。产品用途广泛，可作为电路控制开关、测试设备开关、电动机控制开关和主令控制开关，电焊机用转换开关等。

产品符合标准GB14048.3, GB14048.5, 及IEC/EN60947-3、IEC60947-5-1。

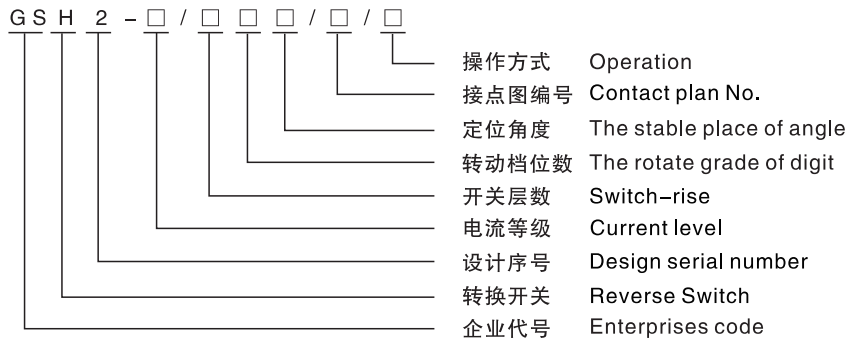
GSH2 series change over switch for the exchange of 50Hz, rated voltage 400V below, the following 230V DC voltage for frequent manual does not get through, breaking the conversion or exchange of load DC Circuit, directly and asynchronous motor control of the three main control circuit, The standard back-end switch may be a small current change-over switch, do auxiliary switch.

Products meet the standard GB14048.3, GB14048.5, and IEC/EN60947-3、IEC60947-5-1.

工作条件 WORK CONDITION

- △ 周围空气温度-25℃ ~ +60℃;
Ambient temperature: -25℃ ~ +60℃;
- △ 最高温度为+40℃时，空气的相对湿度为不超过85%，对由于温度变化偶尔产生的凝露应采取特殊的措施；
Relative humidity is not exceeding 85% at the maximum ambient temperature +40℃. Should give consideration to the dews, which would appear due to temperature change;
- △ 安装地点海拔不超过3000m; Elevation ≤ 3000m;

型号及含义 TYPE AND MEANING



注(Note):

- △ 定位角度代号为：3(30°)；4(45°)；6(60°)；9(90°)。转动档位数、定位角度及操作方式代号分别见“操动器位置代号及对应组合图”，其中定位型产品操作方式位为空；
Location point of view, code-named: 4(45°)；6(60°)；9(90°)。Median of rotating file, location point of view and operation code respectively "parade actuators corresponding combination code and location of the map", one-product operation targeting empty spaces;
- △ 接点图编号见节点图举例，其编号规则：
Figure contact numbers see map, for example, the number of its rules:
 - A.接点图用4位数字表示。Figure contact numbers said 4-digit.
 - B.数字的第一位含义：1表示UPS中使用；2表示多档开关（双掷、三档、四档、五档、步进和调档）；3表示电动机中使用；4表示电压、电流测量用；5表示电容柜中使用；9表示其它。
The first meaning of the figures: 1, said the use of UPS; that more than 2 file switch (double throw, third gear, fourth gear, five gear, stepping and gear shift); 3 that the use of electric motors; 4, said voltage and current measurement use; 5 counter that the use of capacitor; 9, said other.
 - C.后3位数用流水号表示，每一种接点时序一个流水号（多档开关的流水号规则可参照节点图）。
After the 3-digit serial number with that of a timing point of each serial number (serial number of multi-profile switch node in the light of the rules can map).
- △ 操作方式：① 定位型；② 自复型；③ 定位自复型；
Operation: ① location; ② self-rehabilitation; ③ location self-rehabilitation
- △ 定位型、自复型有1-8节，直接控制电动机用有1-6节。
Locations, self-rehabilitation are 1-8 section, the direct control of motors are 1-6 section.

技术参数 Technical parameters

型号规格 character		GSH2-10		GSH2-16		GSH2-20		GSH2-25		GSH2-32		GSH2-63		GSH2-115	
额定绝缘电压Ui Rated insulation voltage	V	690		690		690		690		690		690		690	
约定发热电流Ith Conventional thermal current	A	10		16		20		25		32		63		115	
额定工作电压Ue Rated work voltage	V	230	400	230	400	230	400	230	400	230	400	230	400	230	400
额定工作电流Ie Rated working current															
AC-21A AC-22A	A	10	10	16	16	20	20	25	25	32	32	63	63	115	115
AC-23A	A		7.5		11		15		22		30		57		90
AC-2	A		7.5		11		15		22		30		57		90
AC-3	A		5.5		7.5		11		15		22		36		75
AC-4	A		1.75		2.5		3.5		6.5		11		15		30
AC-15	A	2.5	1.5	4	3	5	4	8	5	14	6				
额定控制功率P Rated power control															
AC-23A			3		5.5		7.5		11		15		30		45
AC-2			3.7		5.5		7.5		11		15		30		45
AC-3			2.2		4		5.5		7.5		11		18.5		30
AC-4			0.55		1		1.5		3		5.5		7.5		11
机械寿命 Mechanical life	万次 Million	30													
电寿命 electricity life	万次 Million	3													
操作频率 Operating frequency	次/h time/h	120													

△ 定位型操作方式的操动器位置代号及对应组合图

Location operation of the actuator device code and the corresponding portfolio map

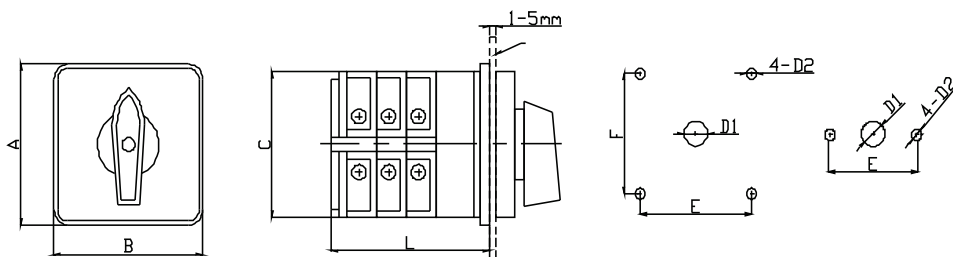
转动挡位数、 旋转角度表示 median of rotating file, angle of swing show	操动器位置 Operating-location								转动挡位数、 旋转角度表示 median of rotating file, angle of swing show	操动器位置 Operating-location					
	30° 转换Conversion									60° 转换Conversion					
23				0°	30°				26			0°	60°		
33			30°	0°	30°				36		60°	0°	60°		
43			30°	0°	30°	60°			46		90°	30°	30°	90°	
53		60°		0°	30°	60°			56		90°	30°	30°	90°	150°
63		60°	30°	0°	30°	60°	90°		66	150°	90°	30°	30°	90°	150°
73	90°	60°	30°	0°	30°	60°	90°		26.1			30°	30°		
83	90°	60°	30°	0°	30°		90°	120°							
	45° 转换 Conversion								90° 转换 Conversion						
24				0°	45°				29			0°	90°		
34			45°	0°	45°				39		90°	0°	90°		
44			45°	0°	45°	90°			49		90°	0°		180°	
54		90°	45°	0°	45°	90°			29.1			45°	45°		
64		90°	45°	0°	45°	90°	135°								
74		90°	45°	0°	45°	90°									
84	135°	90°	45°	0°	45°	90°	135°	150°							

△ 自复型、定位自复型操作方式的操动器位置组合图及代号

Self-rehabilitation, location self-rehabilitation operation of operating-location portfolio map and code

转动挡位数、 旋转角度表示 median of rotating file, angle of swing show	操动器位置Operating-location							
	30° 转换Conversion							
23 · · · · Z				0°	←30°			
33 · · · · Z			30°→	0°	←30°			
33 · · · · Z36			30°→	0°	60°			
53 · · · · Z	60°→		30°→	0°	←30°	←60°		
43 · · · · Z39			30°→	0°			90°	←120°
	45° 转换 Conversion							
24 · · · · Z				0°	←45°			
34 · · · · Z			45°→	0°	←45°			
34 · · · · Z49			90°	0°	←45°			
44 · · · · Z46	135°→		90°	0°	←45°			
	60° 转换Conversion							
36 · · · · Z			60°→	0°	←60°			
56 · · · · Z36	90°→		60°	0°	←60°	←90°		
56 · · · · Z66	120°→		60°	0°	←60°	←120°		

△ 外形尺寸和安装尺寸 Outline Dimension and Installation Dimension



△ 规格与尺寸 Specifications and dimensions

注：n为接触系统节数。

型号规格 character	面板规格 Panel specifications	安装尺寸 Installation Dimension				外形尺寸 Outline Dimension				n为层数 N for the rise
		E	F	D1	D2	A	B	C	L	
GSH2-10	M0	20	-	φ 8	φ 3.2	30	30	28	22 + 8n	≤ 8
GSH2-16	M1	36	36	φ 8.5	φ 4.5	48	48	43	22 + 14n	≤ 8
	M2	48	48	φ 10	φ 4.5	64	64	43	25 + 14n	≤ 8
GSH2-20	M1	36	36	φ 8.5	φ 4.5	48	48	43	22 + 14n	≤ 8
	M2	48	48	φ 10	φ 4.5	64	64	43	25 + 14n	≤ 8
GSH2-25	M1	36	36	φ 8.5	φ 4.5	48	48	45.2	23 + 12.8n	≤ 8
	M2	48	48	φ 10	φ 4.5	64	64	45.2	26.5 + 12.8n	≤ 8
GSH2-32	M2	48	48	φ 10	φ 4.5	64	64	58	29.2 + 12.8n	≤ 8
GSH2-63	M2	48	48	φ 10	φ 4.5	64	64	66	29.2 + 21.5n	≤ 8
	M3	68	68	φ 13	φ 6	88	88	66	29.2 + 21.5n	≤ 8
GSH2-115	M3	68	68	φ 13	φ 6	88	88	84	35 + 26.5n	≤ 8

△ 面板规格 Panel specifications

规格 character	M0	M1	M2	M3
示意图 Schematic picture				

△ 手柄类型 Handle type

类型 type	颜色 color	面板规格 Application of the panel specifications	类型 type	颜色 color	面板规格 Application of the panel specifications
F型 	黑 black	M1 M2	R型 	黑 black	M1 M2 M3
I型 	黑 black	M0 M1 M2	P型 	黑 black	M2 M3

订货须知 ORDER NOTICE

△ 订货时请注明产品型号规格、面板规格、手柄类型及颜色和数量。

When ordering please specify Model specifications, the panel specifications, and handle the type and number of colors.

例如:要订额定电流为32A, 2层, 2档, 旋转角度为45°, 操作图编号为2201, 面板为M2, F手柄, 数量100台, 订货单可写:

Example: to set rated current of 32A, 2floor, 2-operation plan No. 2201, the panel for the M2, F handle, the number of 100 sets, the order can be written:

订货: GSH2-32/224/2201, M2, F, 100台 Orders: GSH2-32/224/2201, M2, F, 100 sets

△ 如果本样本未包含所需操作图或有其它要求, 请提供说明和操作图 (参考辅页订货规范或本样本操作图)。

If the sample does not contain the necessary plans to operate or have other requests, please provide instructions and operating plans (Des reference to the order page, or regulate the operation of this sample map).

△ 订货模板 Order templates

To:

From:

电流等级Current level: 10A 16A 20A 25A 32A 63A 115A

面板规格Panel specifications: M0 M1 M2 M3

手柄类型The type of handle: F R I P

产品型号Product type: GSH2-

订购数量Order quantity:

△ 其它要求Other requirements:

触头编号 Contact No.	面板内容 Panel content						
	面板位置 Panel location						
1-2							
3-4							
5-6							
7-8							
9-10							
11-12							
13-14							
15-16							
17-18							
19-20							
21-22							
23-24							
25-26							
27-28							
29-30							
31-32							

△ × 表示闭合。 × That the closure

△ →、← 表示自动复位。 →、← that automatically reset

△] 表示触点短接。] That short-contact

△ “面板位置” 上层为面板印字, 下层为角度值 (正上方约定为0°, 右为正, 左为负)。

"Location of the panel," the top panel for printers, point of view for the lower value (for the agreement above 0° right now, left for the negative).

■ 接点图举例：

接点编号：1001 Contact numbers	UPS			BYPASS		
	-90°					0°
1-2	x	x	x			
3-4				x	x	x
5-6	x	x	x			
7-8				x	x	x

接点编号：1002 Contact numbers	UPS			BYPASS		
	-90°					0°
1-2	x	x	x			
3-4				x	x	x
5-6	x	x	x			
7-8				x	x	x
9-10	x	x	x			
11-12				x	x	x

接点编号：1003 Contact numbers	UPS			BYPASS		
	-90°					0°
1-2	x	x	x			
3-4				x	x	x
5-6	x	x	x			
7-8				x	x	x
9-10	x	x	x			
11-12				x	x	x
13-14	x	x	x			
15-16				x	x	x

接点编号	触头编号		
2101	1-2		x
	3-4		x
2201	5-6		x
	7-8		x
2301	9-10		x
	11-12		x
2401	13-14		x
	15-16		x
2501	17-18		x
	19-20		x
2601	21-22		x
	23-24		x
2701	25-26		x
	27-28		x
2801	29-30		x
	31-32		x

接点编号	触头编号		
2102	1-2	x	
	3-4		x
2202	5-6	x	
	7-8		x
2302	9-10	x	
	11-12		x
2402	13-14	x	
	15-16		x
2502	17-18	x	
	19-20		x
2602	21-22	x	
	23-24		x
2702	25-26	x	
	27-28		x
2802	29-30	x	
	31-32		x

接点编号	触头编号		
2103	1-2		x
	3-4	x	
2203	5-6		x
	7-8	x	
2303	9-10		x
	11-12	x	
2403	13-14		x
	15-16	x	
2503	17-18		x
	19-20	x	
2603	21-22		x
	23-24	x	
2703	25-26		x
	27-28	x	
2803	29-30		x
	31-32	x	

接点编号	触头编号		
2104	1-2	x	
	3-4		x
2204	5-6	x	
	7-8		x
2304	9-10	x	
	11-12		x
2404	13-14	x	
	15-16		x
2504	17-18	x	
	19-20		x
2604	21-22	x	
	23-24		x
2704	25-26	x	
	27-28		x
2804	29-30	x	
	31-32		x

接点编号	触头编号			
2105	1-2			x
	3-4	x		
2205	5-6			x
	7-8	x		
2305	9-10			x
	11-12	x		
2405	13-14			x
	15-16	x		
2505	17-18			x
	19-20	x		
2605	21-22			x
	23-24	x		
2705	25-26			x
	27-28	x		
2805	29-30			x
	31-32	x		

接点编号	触头编号			
2106	1-2			x
	3-4	x		
	5-6	x		
	7-8			x
2206	9-10			x
	11-12	x		
	13-14	x		
	15-16			x
2306	17-18			x
	19-20	x		
	21-22	x		
	23-24			x
2406	25-26			x
	27-28	x		
	29-30	x		
	31-32			x

接点编号	触头编号			
2111	1-2	x		
	3-4	x		
2211	5-6	x		
	7-8	x		
2311	9-10	x		
	11-12	x		
2411	13-14	x		
	15-16	x		
2511	17-18	x		
	19-20	x		
2611	21-22	x		
	23-24	x		
2711	25-26	x		
	27-28	x		
2811	29-30	x		
	31-32	x		

接点编号	触头编号			
2112	1-2	x		
	3-4	x		
	5-6			x
	7-8			x
2212	9-10	x		
	11-12	x		
	13-14			x
	15-16			x
2312	17-18	x		
	19-20	x		
	21-22			x
	23-24			x
2412	25-26	x		
	27-28	x		
	29-30			x
	31-32			x

接点编号	触头编号			
2113	1-2	x		
	3-4		x	
	5-6			x
2213	7-8	x		
	9-10		x	
2313	11-12			x
	13-14	x		
	15-16		x	
2413	17-18			x
	19-20	x		
	21-22		x	
	23-24			x
2513	25-26	x		
	27-28		x	
	29-30			x
	31-32			

接点编号	触头编号			
2114	1-2	x		
	3-4		x	
	5-6			x
	7-8			x
2214	9-10	x		
	11-12		x	
	13-14			x
	15-16			x
2314	17-18	x		
	19-20		x	
	21-22			x
	23-24			x
2414	25-26	x		
	27-28		x	
	29-30			x
	31-32			x

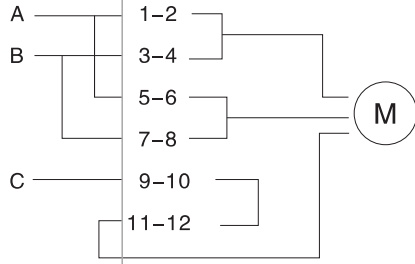
接点编号	触头编号						接点编号	触头编号					接点编号	触头编号							
2115	1-2	x					2122	1-2	x				2153	1-2		x					
	3-4		x					3-4	x						3-4			x			
	5-6			x				5-6			x				5-6						x
	7-8				x			7-8			x				7-8		x				
	9-10					x			9-10	x					9-10				x		
2215	11-12	x					2222	11-12	x				2253	11-12					x		
	13-14		x					13-14			x				13-14		x				
	15-16			x				15-16			x				15-16			x			
	17-18				x			17-18	x						17-18					x	
	19-20					x			19-20	x					19-20		x				
2315	21-22	x					2322	21-22			x		2453	21-22				x			
	23-24		x					23-24			x				23-24					x	
	25-26			x				25-26	x						25-26		x				
	27-28				x		2422	27-28	x				2553	27-28				x			
	29-30					x			29-30			x				29-30					x
	31-32							x		31-32				x			31-32				

接点编号	触头编号						接点编号	触头编号					接点编号	触头编号							
2154	1-2		x				2124	1-2	x				2164	1-2		x					
	3-4			x				3-4	x						3-4		x				
	5-6				x			5-6			x				5-6			x			
	7-8					x			7-8			x				7-8			x		
2254	9-10		x					9-10				x			9-10					x	
	11-12			x			11-12				x		11-12					x			
	13-14				x		13-14					x		13-14					x		
	15-16					x	15-16					x		15-16					x		
2354	17-18		x				2224	17-18	x				2264	17-18		x					
	19-20			x				19-20	x						19-20		x				
	21-22				x			21-22			x					21-22			x		
	23-24					x		23-24			x					23-24			x		
2454	25-26		x					25-26				x				25-26					x
	27-28			x				27-28				x				27-28				x	
	29-30				x			29-30						x		29-30					x
	31-32					x		31-32						x		31-32					x

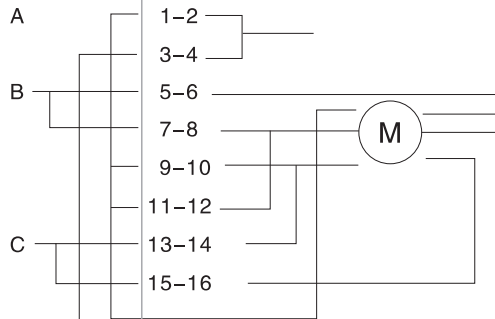
接点编号	触头编号		
2132	1-2	x	
	3-4	x	
	5-6		x
	7-8		x
	9-10	x	
	11-12		x
2232	13-14	x	
	15-16	x	
	17-18		x
	19-20		x
	21-22	x	
	23-24		x
	25-26		
	27-28		
	29-30		
	31-32		

接点编号	触头编号		
2172	1-2		x
	3-4		x
	5-6		x
	7-8		x
	9-10		x
	11-12		x
2272	13-14		x
	15-16		x
	17-18		x
	19-20		x
	21-22		x
	23-24		x
	25-26		
	27-28		
	29-30		
	31-32		

接点编号：3001

功能	启动、反接制动		反转、密接通断		
	触头编号	手柄角度	1	0	2
	1-2				X
	3-4		X		
	5-6		X		
	7-8				X
	9-10		X		X
	11-12		X		X

接点编号：3002

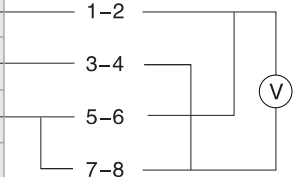
功能	双速电动机启动和变速				
	触头编号	手柄角度	1	0	2
	1-2		X		
	3-4				X
	5-6				X
	7-8		X		
	9-10				X
	11-12				X
	13-14		X		
	15-16				X

接点编号：3003				
功能	星三角启动			
	触点编号	0	Y	\triangle
	手柄角度	-45°	0	45°
A	1-2		X	X
	3-4			X
B	5-6		X	X
	7-8		X	
	9-10			X
C	11-12		X	
	13-14		X	X
	15-16			X

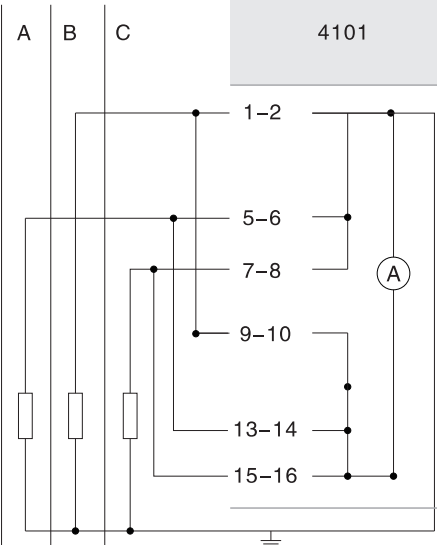
4501		0	AB	BC	CA
		0°	90°	180°	270°
A	1-2		X		
	3-4				X
B	5-6			X	
	7-8		X		
C	9-10				X
	11-12			X	

注：有“0”位，无N线，转换测量三相线电压；

触头编号	0	U_{AB}	U_{BC}	U_{CA}
	-90°	0°	90°	180°
4502	1-2		X	X
	3-4			
	5-6			
	7-8		X	
	9-10			
	11-12			X

接点编号	印字	AB	BC	CA
4503	角度	-90°	0°	90°
B		X	X	
C			X	X
A				X
		X		

接点编号	触头编号	O	AB	BC	AC
4504	1-2				X
	3-4		X		
	5-6			X	X
	7-8		X	X	

		4101			
		O	A	B	C
		0°	90°	180°	270°
		X	X		X
		X		X	X
		X	X	X	
				X	
			X		

注: 三个互感器, 有“0”位, 转换测量A,B,C三相线电流;